



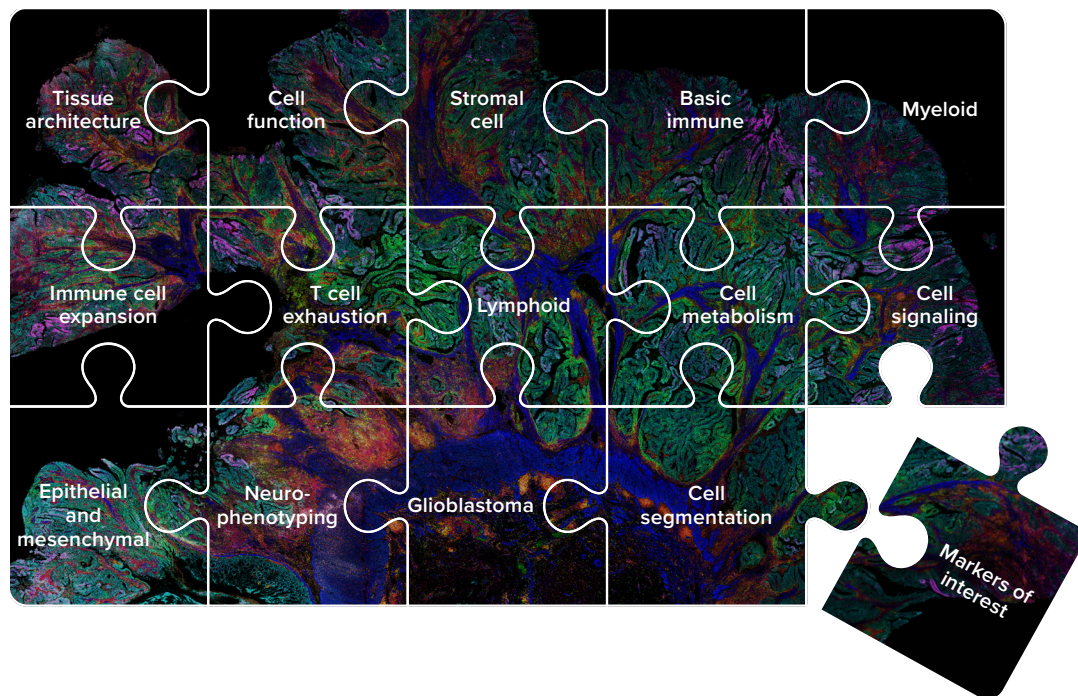
## HUMAN IMMUNO-ONCOLOGY IMC PANELS

# Modular Panels for Targeted Spatial Discovery

Quickly interpret the tumor microenvironment with modular Imaging Mass Cytometry<sup>™</sup> (IMC<sup>™</sup>) panels. Choose from 14-plus modular panels, carefully curated to help you seamlessly execute 40-plus-marker immuno-oncology studies – enabling you to visualize tumor and immune interactions, map localized functional responses and characterize cell features.

### Easily piece together the whole picture

Simple, fast and highly flexible.

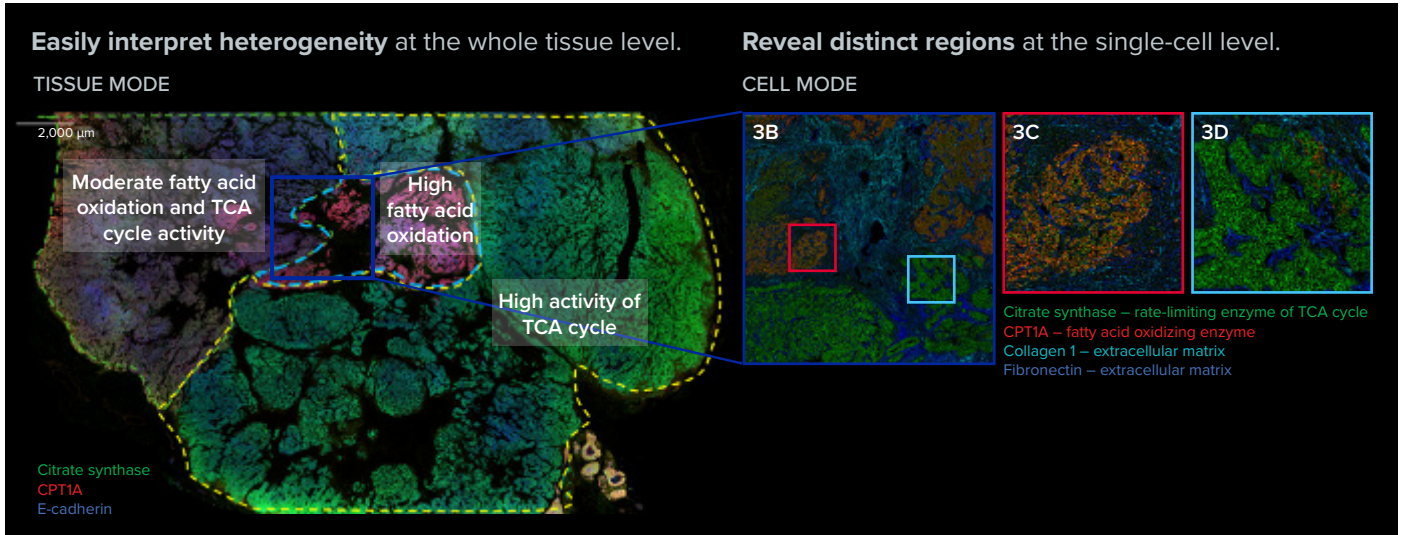


Each panel is comprised of key immuno-oncology targets, **conveniently packaged into modular reagents** for you to build from.

**Your research,  
Your way**

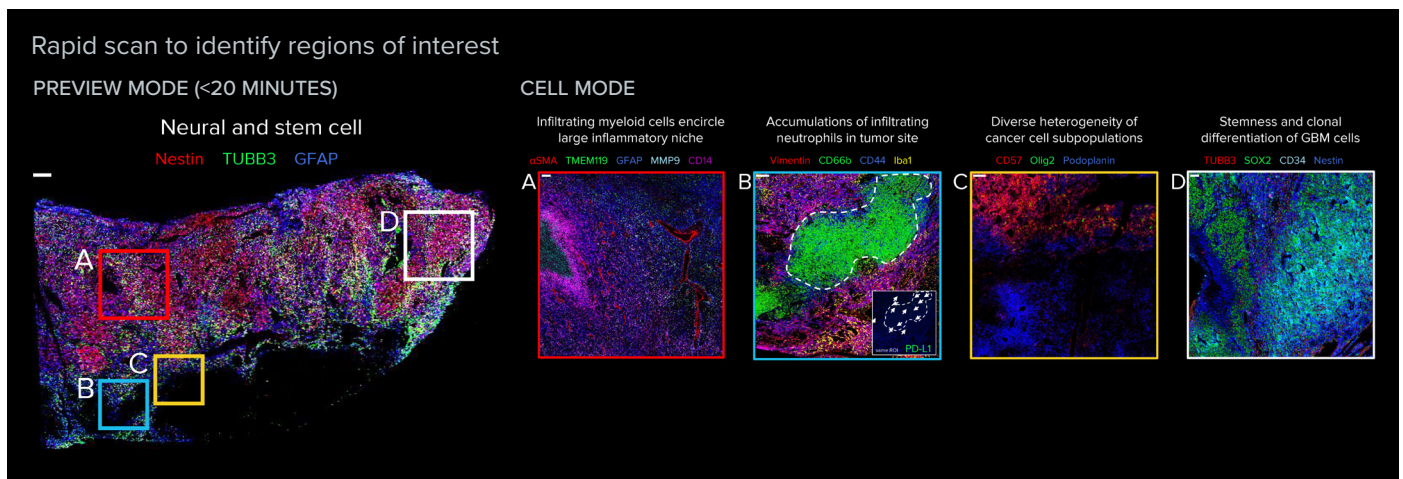
## Easily build a 40-plus-marker panel targeting your specific question across any cancer type

A 41-marker IMC panel reveals spatial organization of metabolically active tumor cells in breast adenocarcinoma



Human Immuno-Oncology IMC Panel							Human Cell Metabolism IMC Panel	Maxpar™ IMC Cell Segmentation Kit
Cell Functional State	Stromal Cell	Basic Immune	Lymphoid	Myeloid	Tissue Architecture	Epithelial and Mesenchymal		

A 41-marker panel targeting neural-specific markers in human glioblastoma (GBM) tissue



Stromal Cell	Lymphoid	Myeloid	Cell Functional State	Basic Immune	Glioblastoma IMC Panel	Human Neuro Expansion IMC Panel	Maxpar Neuro Phenotyping IMC Panel Kit	Maxpar IMC Cell Segmentation Kit
--------------	----------	---------	-----------------------	--------------	------------------------	---------------------------------	--	----------------------------------

See more images

Start building your panel with our **compatibility guide**

## Mix and match panels

Every research question is unique – so generate the insights that matter to you. Rapid high-plex panel design with ready-made panels that fit together aligns with your specific biological questions and research goals.



### Human immuno-oncology

Tissue Architecture	Cell Functional State	Stromal Cell	Basic Immune	Lymphoid	Myeloid	Epithelial and Mesenchymal
Vasculature, epithelial cells, extracellular matrix CD31, collagen 1, fibronectin, pan-cytokeratin	Cell proliferation, T cell exhaustion, regulatory T cells PD-L1, PD-1, FoxP3, granzyme B, Ki-67	Smooth muscle cells, stem cell-like tumor cells, lymphatic endothelium, activated fibroblasts alpha-smooth muscle actin, CD44, FAP, podoplanin	Key lymphoid and myeloid cell subtypes CD3ε, CD45, CD20, CD68	Immune cell infiltrates in tumors CD4, CD8a, CD45RO, CD57	Monocytes, granulocytes, macrophages and dendritic cells CD11b, CD11c, CD14, CD66b, CD163, HLA-DR	Cancer cell signaling and metastasis β-catenin, E-cadherin, EpCAM, vimentin

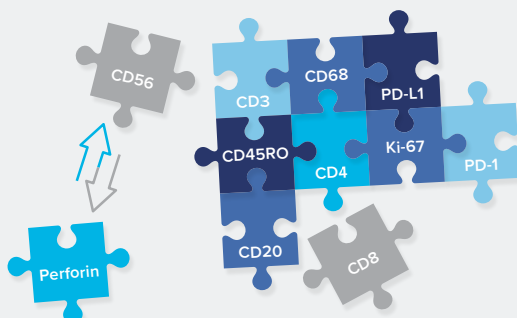


### Functional profiling

Immune Cell Expansion	T Cell Exhaustion	Cell Metabolism	Cell Signaling	Neuro Phenotyping	Neuro Expansion	Glioblastoma
CD7, CD15, CD16, CD38, CD206, iNOS, MPO	TIM-3, IDO, LAG-3, OX40, CTLA-4	GLUT1, citrate synthase, ATP5A, CPT1A, LDHA, p4E-BP1, pS6	EGFR, pSMAD, GSK3β, p-tyrosine, YAP1, pMAPK, PTEN	Iba1, GFAP, NeuN, S100β, MAP2, CD34, Olig2	TMEM119, beta-III tubulin, synaptophysin	SOX2, MMP9, nestin, EGFR, vimentin



### Neuro-oncology



### Don't see your market of interest?

Select from a catalog of 300-plus labeled antibodies or leverage our Custom Conjugation Services.

## Panel ordering information

Product	Part Number
Human Immuno-Oncology IMC Panel, 31 Antibodies	201509
Human Tissue Architecture IMC Panel, 4 Antibodies	201510
Human Stromal Cell IMC Panel, 4 Antibodies	201511
Human Lymphoid IMC Panel, 4 Antibodies	201512
Human Myeloid IMC Panel, 6 Antibodies	201513
Human Cell Functional State IMC Panel, 5 Antibodies	201514
Human Epithelial and Mesenchymal IMC Panel, 4 Antibodies	201515
Human Basic Immune IMC Panel, 4 Antibodies	201518

## Compatible products

Product	Part Number
Cell-ID™ Intercalator-Ir	201192B
Maxpar IMC Cell Segmentation Kit	201500
Maxpar Neuro Phenotyping IMC Panel Kit	201337
Human Neuro Expansion IMC Panel, 3 Antibodies*	9100012
Glioblastoma IMC Panel, 5 Antibodies*	9100011
Human Immune Cell Expansion IMC Panel, 7 Antibodies	201516
Human T Cell Exhaustion IMC Panel, 5 Antibodies	201519
Human Cell Metabolism IMC Panel, 7 Antibodies	201521
Human Cell Signaling IMC Panel, 7 Antibodies	201522

\* Not compatible with all seven subpanels of the Human Immuno-Oncology IMC Panel. Check [panel compatibility guide](#) to view panel configurations.



## Standard BioTools Lab Services

Don't have access to a Hyperion™ Imaging System? Standard BioTools™ Lab Services gives you access to cutting-edge spatial proteomics. From study design through data acquisition and bioinformatics support, simply ship your samples and rely on end-to-end expertise to generate high-quality, publication-ready data with confidence.

For more information, visit [standardbio.com/products-services/imc-panels](https://standardbio.com/products-services/imc-panels)



FLDM-01335 Rev 05 032026

**Human Immuno-Oncology IMC Panels Flyer**

**For Research Use Only. Not for use in diagnostic procedures.**

Patent and License Information: [www.standardbio.com/legal/notices](http://www.standardbio.com/legal/notices). Trademarks: [www.standardbio.com/legal/trademarks](http://www.standardbio.com/legal/trademarks).

Any other trademarks are the sole property of their respective owners. ©2026 Standard BioTools Inc. All rights reserved.